

# Adur Art Trail 2025

Weekends 7th to 22nd June

Visit exciting trail venues across  
Shoreham-by-Sea & surrounds.  
Things to see, do and buy.

adur**Art**collective



[adurartcollective.co.uk](http://adurartcollective.co.uk)  
@adurarts #adurarts



**TOWN QUAY STUDIOS**

**Contemporary Art Gallery**

- Featuring works by local artists
- Riverside exhibitions & events

**Bespoke Framing Services**

- Handcrafted hardwood & softwood frames
- Conservation & shadow box framing
- Canvas stretching & mounting
- Art glass & museum quality glazing

**VENUE 7 / ADUR ART TRAIL**

6 Town Quay, Shoreham-By-Sea BN43 5DS  
www.townquaystudios.co.uk

07306137043  
info@townquaystudios.co.uk  
@townquaystudios



**BEACH DREAMS**  
COMMUNITY FESTIVAL  
13-15TH JUNE

Close to trail  
Venues 19 & 20

The Friends of Old Shoreham  
**Midsummer Fair  
& Sussex Tree Festival**  
Saturday 21st June 2025  
Celebrate the Solstice with  
music, activities stalls & more  
from dawn to dusk!

Close to trail Venues 1,2,3 & 4

Community Fair  
and Tree Festival

# adurArtcollective

## Adur Art Trail 7th & 8th, 14th & 15th and 21 & 22nd June 2025

Welcome to the Adur Art Trail! This year we have more exciting new venues and artists than ever to visit alongside old favourites such as Houseboat Verda, Brighton City Airport, Shoreham Gallery and St Mary de Haura to mention just a few.

Look out for our new central Shoreham venues, The Circular Space in Ham Road and the much-loved Ropetackle Centre which becomes the art 'hub' for the duration of the Trail, offering an overview of the artistic offering for 2025, brochures and, during the week, relaxed artist-led workshop sessions.

The Circular Space is displaying a cross-section of work by the various creative groups that use the space over the three weekends of the Trail. It's a great opportunity to see the work they do and peek inside the Scrap Space at this venue if you haven't been there.

Shoreham Beach has a good selection of artists too - so why not set aside a day to visit as many as you can, including Amy Frankie Smith's fascinating porcelain and atmospheric paintings at her Flag Square studio.

Further afield, we have three wonderful venues, at Boundary Road in Lancing, Albion Street in Southwick and Madebymebythesea, West Parade, Worthing. Well worth the trip!

Our Trail brochures are available in many outlets across the area and at the various Saturday markets in Shoreham during May & June. We'll also be launching our new improved website around this time so watch our Instagram and Facebook pages for updates and take a look.

We hope you enjoy the Adur Art Trail - featuring amazing and diverse artworks from over 100 local artists.

**WEB** [adurartcollective.co.uk](http://adurartcollective.co.uk)

**INSTAGRAM** [adurarts](https://www.instagram.com/adurarts)

**FACEBOOK** [adurarts](https://www.facebook.com/adurarts)



## VENUE 1

### 54 LESSER FOXHOLES

Shoreham-by-Sea BN43 5NT

Sarah Bidwell works primarily in textiles creating both decorative and functional pieces including wall-hangings, collages and cushions using traditional techniques such as block-printing, patchwork and quilting.

The garden will open with a pop-up cafe by Juliette serving a selection of delicious savouries, cakes and cream teas (weather permitting).

**Sarah Bidwell**  
(Textiles)

Open weekend of Saturday 21st and Sunday 22nd June Only, 11am to 5pm



## VENUE 2

### 178 OLD SHOREHAM ROAD

Shoreham-by-Sea BN43 5TE

A solo show from Krysia Drury, showing both new and old paintings, prints and cards. Krysia is a BA Fine Art Graduate in painting and printmaking and taught art for many years. She is a member of the Sussex Watercolour Society and has shown work in galleries in London and the South East.

**Krysia Drury**  
(Paintings, Original Prints)

Open Weekends 7th to 22nd June,  
11am to 5pm

## VENUE 3

### 112 OLD SHOREHAM ROAD

Shoreham-by-Sea BN43 5TE

'Tales of the Riverbank'

John Farmelo is a painter and printmaker. He is fascinated by the visual arts because of how they encourage us to look closely at the world around us. In the past year he has become increasingly interested in the Adur riverbank which is on his doorstep, especially the rare saltmarsh environment. Much of his recent work has been focussed on that subject.

**John Farmelo**  
(Painting, Screen Printing, Textiles)

Open Weekends Saturday 7th to Sunday 22nd June, 11am to 5pm



## VENUE 4

### 79 OLD SHOREHAM ROAD

Shoreham-by-Sea BN43 5TF

A celebration of bold creativity through paintings, prints, ceramics, textiles, and digital artistry, offering a dynamic blend of texture, color, and form across diverse mediums.

**Gill Dixon** (paintings, drawings, textiles)  
**Susanne Hopkinson** (collages & paintings), **Jen Green** (watercolours, collograph & lino prints), **Mathilde Blum** (ceramics), **Hattie Lockhart Smith** (paintings & collages), **Lois Pawson** (illustration & prints)

Open Weekends 7th to 22nd June,  
11am to 5pm





## VENUE 5 : TRAIL HUB

### ROPETACKLE ARTS CENTRE

Little High Street, Shoreham-By-Sea  
BN43 5EG

The Art Trail Hub at Ropetackle Arts Centre is the place to find out what's on during the trail. On Saturdays and weekdays you can collect your Art Trail brochure, stop for a drink or lunch or sign up for a free creative workshop. You can even write a poem responding to artwork for the PoArtry collaboration with Wordfest. Here you will find information from individual trail artists, a display of prints to see and buy and a rolling screen display of artwork from the many talented Adur Art Collective artists.

Open 7th to 22nd June, 10am to 4pm  
Saturdays and weekdays (closed Sundays)



## VENUE 6

### SOLD ART STUDIO

62 High Street, Shoreham-by-Sea,  
BN43 5DB

SOLD Studio is a group of young adults with learning differences and autism who all share a love of creating but use many different mediums. This year's exhibition of original art, prints, mugs and homeware promises to be a fabulously joyful riot of colour held in this much loved charity shop.

Open 10am to 4pm Tuesday to  
Saturday (closed Sunday & Monday)

## VENUE 7

### TOWN QUAY STUDIOS

6 Town Quay,  
Shoreham-By-Sea, BN43 5DS

A contemporary riverside gallery and studio, Town Quay Studios offers a unique location overlooking the River Adur. Angela Edwards, the resident artist will be displaying a selection of both her charcoal drawings and oil paintings as well as a number of limited edition prints. Angela is joined by local artist, Dave Stringer who will be showing a variety of his drawings and paintings.

**Angela Edwards** (Painting, Drawing)  
**Dave Stringer** (Painting, Drawing)

Open Sat - Sun 11am to 5pm  
and Wed to Fri 11am to 4pm



## VENUE 8

### SALT MARSH STUDIO

39 Salt Marsh Road,  
Shoreham-by-Sea BN43 5QJ

Semi-Abstract paintings, prints and collages filled with colour, light and a bit of whimsy, inspired by Shoreham Harbour and the River Adur. Quirky and fun Nature Journals exploring the rich life of the salt marsh and Shoreham's shingle beach.

**Seana Mallen & Friends**

Open 14th and 15th June ONLY  
11am to 6pm





## VENUE 9

### 31 SHIP STREET

Shoreham-by-Sea,  
BN43 5DH

In its second year of the trail, this intriguing venue will showcase a series of surreal salvage sculptural artworks. New 'Objects of Desire' collections by Cath Whiteoak will be co-curated alongside abstract assemblage works, made from recycled wood and metal, by guest artist John Mulligan. House, yard and studio open first 2 weekends only.

Sculpture and Assemblages from  
**Cath Whiteoak** and **John Mulligan**

Open Weekends 7th & 8th and  
14th & 15th June only, 11am to 5pm



## VENUE 10

### ST MARY DE HAURA

East Street, Shoreham-by-Sea,  
BN43 5QD

Local artists interpret the theme 'Peace & Joy' through painting, photography, sculpture, stained glass, ceramics and textiles. This atmospheric 900 year old parish church is a special place for enjoying artwork; providing disabled access and a churchyard garden.

### Various Artists

Open Sat 7th to Sun 22nd June  
Mon-Sat 11am to 5pm  
and Sun 2pm to 5pm

## VENUE 11

### THE SECRET GARDEN

Unit 7 Tarmount Studios Emporium,  
2 Tarmount Lane, Shoreham-by-Sea  
BN43 6DA

Trisha Keith is an expressive artist and colourist, inspired by the natural world and landscape. Using watercolour and mixed media, she produces colourful, organic paintings which capture the imagination and uplift the senses.

**Trisha Keith** (Painting, Mixed Media)

Open Weekends 7th to 22nd June,  
11am to 5pm



## VENUE 12

### THE KILN ROOM

Next to Tarmount Studios Emporium,  
Tarmount Lane, Shoreham-by-Sea  
BN43 6DA

Kirsten Wild works from her studio in the heart of Shoreham-by-Sea making a range of wheel-thrown and altered stoneware pots, including tulipiers and some wood-fired pieces. Drop by to say hello and enjoy the courtyard cafe too - the perfect art trail pitstop. @wildwarestudio

**Kirsten Wild** (Stoneware Ceramics)

Open Weekends 7th to 22nd June,  
11am to 5pm





## VENUE 13

### CHAPTER 34

32-34 Brunswick Rd, Shoreham-By-Sea, BN43 5WB

The fantastic Chapter 34 book shop is a new venue on the trail this year. Stop for books, coffees and visit the upstairs gallery to see artworks inspired by nature. Louise McLoughlin enjoys capturing the landscape of Sussex and the coastline of Cornwall and Devon where she grew up. Heather Curwen's work is inspired by the patterns and rhythms of natural world in times of transition.

**Louise McLoughlin** (Painting, Drawing), **Heather Curwen** (Mixed Media, Print)

Open weekends 7th to 22nd June  
10am to 4pm, plus weekday opening



## VENUE 14

### OVER THE MOON

The Circular Space, Ham Road, Shoreham-By-Sea BN43 6PA

"Creative Contexts" is an exhibition showcasing work produced by art and craft groups that meet at The Circular Space, shown in the space where they meet and from where they source materials. It features painting, drawing, printing, textiles, collage and assemblage, from both adults and kids.

Open trail weekends 11am to 5pm  
(except Saturday 7th - closed that day)

## VENUE 15

### SHOREHAM GALLERY

27 Brunswick Road, 27 Brunswick Road, Shoreham-by-Sea BN43 5WA

A friendly gallery run by a collective of twenty local Sussex artists & makers, with monthly guest artists and special events, a unique sculpture garden and a working artist's studio. Paintings, prints, sculpture, glass, turned wood, photography, mosaics, textiles, jewellery, ceramics and more.

20 Local Artists, including members of Adur Art Collective

Open Monday - Saturday 10am to 5pm  
and Sundays 11am to 4.40pm  
For more information visit website:  
[www.shorehamgallery.co.uk](http://www.shorehamgallery.co.uk)



## VENUE 16

### 47 ROSSLYN ROAD

Shoreham-by-Sea BN43 6WL

A vibrant show of paintings, sculptures, ceramics, jewellery, textiles and collage. Visit this friendly venue to see and buy artworks and crafts, to enjoy drinks and homemade cakes and to see the colourful garden studio where action takes place.

**Hala Sabet** (Paintings, Sculpture, Ceramics), **Gillian Hills** (Mixed Media, Textiles), **Valerie Shepherd** (Sculpture, Ceramics), **Jane Pinder** (Jewellery)

Open Weekends 7th to 22nd June  
11am to 5pm



## FIND VENUES ON THE ADUR ART TRAIL



This map provides indicative locations to help plan your visit. The trail involves 30 very special venues in Shoreham-by-Sea town, at Shoreham Beach, along the River Adur, Lancing, Southwick and Worthing.



An easy way to locate each venue is to put the postcode address into Google Maps. Postcodes are all listed in the table on Page 21 of this brochure.

Even easier - is to use the Adur Art Trail Google Map at this QR code. This online map is pre-linked to show every venue along the trail and includes details about the artists at each venue:





## VENUE 17

### BRIGHTON CITY AIRPORT

Cecil Pashley Way,  
Shoreham-by-sea BN43 5FF

Visit the first floor whispering gallery at this dramatic and historic art deco airport terminal building to see a feast of paintings, drawings and mixed media creations from Sussex artists, including Brighton City Airport resident artist Gemma Hawkes.

**David King, Aylin Sharp, Luca Tonks, Mari Hunt, James Kingston-Stewart, Gemma Hawkes**

Gallery open weekends 7th to 22nd June 9am-6pm daily. Pay & Display car parking available. Footpath route from town. Hummingbird Restaurant on-site.



## VENUE 18

### CAFE NO.8

10 Cecil Pashley Way,  
Shoreham-by-Sea BN43 5FF

Bring your sketchbook to sit and draw at this unique outdoor cafe beside the airfield at Brighton City Airport. Postcard drawing competitions during the Adur Art Trail weekends include '*Draw Things with Wings*' and '*Draw Your Dream Cake*'. Prizes to be won! Artists welcome to bring easels. Great views. Yummy food & drinks to buy.

**You** are the artist!

Open weekends 7th to 22nd June, 8.30 am to 5pm, and weekdays 8.30am to 4pm  
Street signs near the airport building will help visitors locate Cafe No.8  
What3Words: snacks plodding winter

## VENUE 19

### GOOD SHIP VERDA

20 Riverbank, Shoreham-by-Sea, BN43 5YH

We are a jolly crew of artists and makers who all have a love for nature and a concern for the environment. Our work ranges from photography to oil paintings, digital and drypoint prints, fused glass and collage, greetings cards and a whole lot more.

**Elaine Bellamy** (Mosaic, Pottery), **Steve Carroll** (Illustration, Print), **Julia Ann Field** (Painting), **Deborah Fleming** (Mixed Media), **Sarah Fer** (Painting, Drawing), **Judy Alexander** (Painting, Textiles), **Sarah Bridgland** (Glass Fusion), **Candy Medusa** (Mixed Media, Upcycling), **Hayley Richards** (Enchanted Trees, Dream Catchers), **Ricardo Purnell** (Photography). Open Weekends 7th to 22nd June, 11am to 5pm



## VENUE 20

### REBUS ARTS STUDIO

7 Riverbank,  
Shoreham-by-Sea, BN43 5YH

Welcome to Rebus Arts Studio, opening for the first time with the Adur Art Collective. Lisa Green and Clara O'Connor share the studio and they will be exhibiting current work, alongside work from the community riverbank artist's group. Simon Mathews will be showing his wonderful ceramics.

**Lisa Green** (Painting), **Clara O'Connor** (Painting), **Simon Mathews** (Ceramics), **Riverbank Community Artist's Group** (Painting & Textiles)

Open Weekends 7th to 22nd June, 11am to 5pm





## VENUE 21

### AMY FRANKIE SMITH STUDIO

6 Flag Square, Shoreham Beach,  
BN43 5RZ

Amy's porcelain lamps and expressive paintings are directly inspired by the sea. Visit her beach studio to see the latest pendant lights and large format paintings. Amy's smaller pieces also make great gifts, or come and treat yourself!

**Amy Frankie Smith**  
(Ceramics, Painting)

Open Sat 21st & Sun 22nd June only,  
11am to 5pm



## VENUE 22

### 8 OLD FORT ROAD

Shoreham-by-Sea,  
BN43 5RJ

Artist Sophie Garwood opens the doors to her delightful new trail venue featuring her vividly colourful paintings. Experimenting with serene landscapes and beach vistas, her art reflects beauty and emotion. Join Sophie in exploring life's simple pleasures through art. Shoreham-by-Sea BN43 5RJ

**Sophie Garwood** (Painting)  
**Carole Ashby** (Ceramics)

Open weekends 7th to 22nd June,  
11am to 5pm

## VENUE 23

### 1 SHINGLE ROAD

Shoreham-by-Sea, BN43 5RH

A solo show by embroidery artist Becky Edmunds. Becky uses traditional stitching techniques to create contemporary artworks. Her work breathes new life into vintage materials, repurposing old photographs, discarded doilies and table linens to create works that celebrate pattern and create unexpected connections.

**Becky Edmunds** (Textiles)

Open weekends 7th to 22nd June,  
11am to 5pm



## VENUE 24

### 18 THE MEADWAY

Garden Studio, Shoreham-by-Sea.  
BN43 5RP

Ceramics and oil and cold wax paintings from artist Terri Griffin: I have worked with clay most of my life and still enjoy its surprises. I use a variety of stoneware clays, depending on the type of clay work. Decoration tends to be with oxides and slips rather than glazes. My paintings are inspired by my early morning tai chi practice on the beach.

**Terri Griffin** (Pottery, Painting)

Open weekends 7th to 22nd June,  
11am to 5pm





## VENUE 25

### CRAFTY CREATIONS

No 10 The Meadway,  
Shoreham-by-Sea BN43 5RP

Extraordinary crafts to see and buy. Here you will find beautiful handmade objects, including eco-conscious jewellery, recycled and stitched textiles, fused glass artworks, sculptures, clocks, ceramic murals and pots inspired by the Sussex Downs and coastline and paper art featuring traditional Japanese paper craft.

**Hilary Stirling** (Ceramics),  
**Lynda Nurse** (Eco-Jewellery, Textiles),  
**Bernie Stevenson** (Glass Creations),  
**Yoniko Shiraishi** (Paper Arts)

Open weekends 7th to 22nd June  
10am to 4pm



## VENUE 26

### THE ARTIST'S DEN

11b Riverside Road, Shoreham-by-Sea,  
BN43 5RT

A space where art happens, in a secret garden studio, tucked away from the world. Katie's work invites a connection between the visitor and her practice. Making art is can be playful and fun, as well as serious; something to joyfully share. The Artist's Den is an interactive exhibition where you take things as you find them and get involved if you wish.

**Katie Sollohub** (Installation,  
Interactive, Mixed Media)

Open 11-5 on 7th & 8th June ONLY

## VENUE 27

### RIVER VIEW STUDIO

47 Riverside Road, Shoreham-by-Sea,  
BN43 5RB

Five artists exhibiting a range of exciting art in a riverside setting. Meet the artists, view the artwork and enjoy refreshments and cake in the garden, overlooking the changing tides of the river. Donations for tea & cake go to The Clocktower Sanctuary.

**Em Fry** (Painting), **Miranda Vincent** (Ceramics), **Jo Taswell** (Painting and jewellery), **Teresa Martin** (Sculpture), **Abby Martin** (Sculpture)

Open Weekends 7th to 22nd June,  
11am to 5pm



## VENUE 28

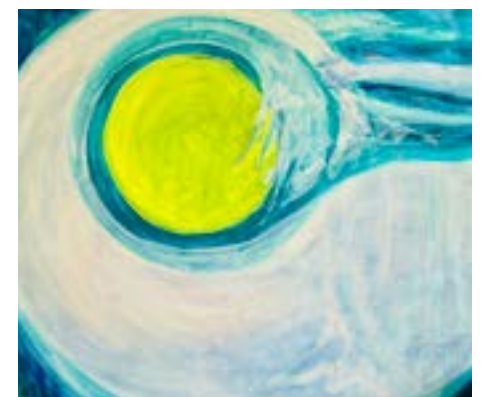
### ARTISTS AT WEST BEACH

38 Boundary Road, Lancing, BN15 8NF

This popup exhibition features four artists' diverse artwork expressed through paintings, mixed media, collages, hand-crafted books, prints, cards, and ceramics. The house has views of the South Downs, is next to open fields and a small woodland, and is within minutes of the Widewater Nature Reserve.

**Samantha Jane Anderson** (Paintings, Mixed Media, Prints), **Scilla Allen** (Paintings), **Katie Gander** (Printmaking, Collage, Hand Crafted Books), **Roy Webb** (Acrylic Paintings, Cards)

Open weekends 7th to 22nd June,  
11am to 5pm





## VENUE 29

### ALBION STREET SOUTHWICK

132 – 134 Albion Street, Shoreham Port, Southwick, BN42 4DP

Sue is a mosaic artist specialising in bespoke commissions, large scale mosaics and working with schools and communities. Her work shows a love of stained glass and of rich colour, light reflection, and texture. Sue enjoys the wonderful versatility of mosaics, combining art, joy, and practical applications, especially its suitability for the outdoors and in large scale architectural settings.

**Sue Penrose** (Mosaics)

Open Weekends 7th to 22nd June  
11am to 5pm. 700 route bus stop  
directly outside venue.



## VENUE 30

### GARAGE STUDIO WORTHING

Garage 1, Rear of Normandy Court,  
West Parade, Worthing BN11 3QY  
(note access is from West Parade)

Vicky creates beautifully detailed artwork inspired by nostalgia, architecture and heritage. Her Art Deco and vintage-style designs appear as framed art, posters and gifts – celebrating memory, storytelling and timeless charm.  
[www.madebymebythesea.co.uk](http://www.madebymebythesea.co.uk)

**Vicky Anne Vaughan** (Art Deco,  
Vintage and Nostalgia Illustration)

Open Weekends 7th - 8th and  
21st - 22nd June Only, 11am to 3pm  
(closed 14th - 15th June).

## OPENING HOURS & VISITOR INFORMATION

The Adur Art Trail runs for three weekends in June, from 7th to 22nd. Some venues are also open weekdays. Some serve drinks and snacks for a cash donation - or have cafes nearby. Many trail venues have disabled access, some have steps or stairs. Shoreham-by-Sea, Lancing, Worthing and Southwick are on frequent rail and bus routes; including Stagecoach 700 and Brighton & Hove Bus 2.

Number	Venue	Postcode	7th June	8th June	14th June	15th June	21st June	22nd June	Other Days	Disabled Access	Refreshments
Venue 1	54 Lesser Foscholes	BN43 0NT	X	X	X	X	Open 11-5	Open 11-5	X	X	Pop-Up Cafe + Cream Teas
Venue 2	178 Old Shoreham Road	BN43 5TE	Open 11-5	Open 11-5	Open 11-5	Open 11-5	Open 11-5	Open 11-5	X	X	Refreshments available
Venue 3	112 Old Shoreham Road	BN43 5TE	Open 11-5	Open 11-5	Open 11-5	Open 11-5	Open 11-5	Open 11-5	X	Partial Disabled Access	X
Venue 4	79 Old Shoreham Road	BN43 5TF	Open 11-5	Open 11-5	Open 11-5	Open 11-5	Open 11-5	Open 11-5	X	X	X
Venue 5	Rugbyville Arts Centre	BN45 5EG	Open 10-4	X	Open 10-4	X	Open 10-4	X	Weekdays 10-4	Disabled Access	Cafe at venue
Venue 6	SCLD Art Studio	BN43 5DB	Open 10-4	X	Open 10-4	X	Open 10-4	Open 10-4	Tue-Sat 10-4	Disabled Access	X
Venue 7	Town Quay Studio	BN43 5DB	Open 10-5	Open 10-5	Open 10-5	Open 10-5	Open 10-5	Open 10-5	Wed-Fri 11-4	X	X
Venue 8	Salt Marsh Studio	BN43 5GJ	X	X	Open 11-5	Open 11-5	X	X	X	X	X
Venue 9	21 Ship Street	BN43 5DH	Open 11-5	Open 11-5	Open 11-5	Open 11-5	X	X	X	Partial Disabled Access	X
Venue 10	St Mary de Haura	BN43 5GD	Open 11-5	Open 11-5	Open 11-5	Open 11-5	Open 11-5	Open 11-5	Weekdays 11-5	Disabled Access	X
Venue 11	The Secret Garden	BN43 5GQ	Open 11-5	Open 11-5	Open 11-5	Open 11-5	Open 11-5	Open 11-5	X	Disabled Access	X
Venue 12	The Kiln Rooms	BN43 5GA	Open 11-5	Open 11-5	Open 11-5	Open 11-5	Open 11-5	Open 11-5	X	Disabled Access	X
Venue 13	Chapter 34	BN43 5MS	Open 10-4	Open 10-4	Open 10-4	Open 10-4	Open 10-4	Open 10-4	Tues 12-5 Wed-Fri 10-4	X	Coffee Shop at venue
Venue 14	Over the Moon	BN43 5PA	X	Open 11-5	Open 11-5	Open 11-5	Open 11-5	Open 11-5	X	Disabled Access	Drinks & Snacks to buy
Venue 15	Shoreham Gallery	BN43 5NA	Open 10-5	Open 11-4	Open 10-5	Open 11-4	Open 10-5	Open 11-4	Weekdays 10-5	Partial Disabled Access	X
Venue 16	47 Rosslyn Road	BN43 5HL	Open 11-5	Open 11-5	Open 11-5	Open 11-5	Open 11-5	Open 11-5	X	Partial Disabled Access	Drinks & Cakes to buy
Venue 17	Brighton City Airport	BN43 5FF	Open 9-6	Open 9-6	Open 9-6	Open 9-6	Open 9-6	Open 9-6	Weekdays 9-6	Disabled Access	Hummingbird Restaurant
Venue 18	Cafe No.8	BN43 5FF	Open 10-4	Open 9-4	Open 10-4	Open 9-4	Open 10-4	Open 9-4	Weekdays 10-3	Partial Disabled Access	Venue is outdoor cafe
Venue 19	Good Ship Vanda	BN43 5YH	Open 11-5	Open 11-5	Open 11-5	Open 11-5	Open 11-5	Open 11-5	X	X	X
Venue 20	Rebus Arts Studio	BN43 5YH	Open 11-5	Open 11-5	Open 11-5	Open 11-5	Open 11-5	Open 11-5	X	X	X
Venue 21	Amy Frankie Smith Studio	BN43 5H2	X	X	X	X	Open 11-5	Open 11-5	X	Venue has steps	X
Venue 22	8 Old Fort Road	BN43 5HJ	Open 11-5	Open 11-5	Open 11-5	Open 11-5	Open 11-5	Open 11-5	X	Partial Disabled Access	X
Venue 23	1 Shingle Road	BN43 5DH	Open 11-5	Open 11-5	Open 11-5	Open 11-5	Open 11-5	Open 11-5	X	“ “	X
Venue 24	18 The Meadow	BN43 5RP	Open 11-5	Open 11-5	Open 11-5	Open 11-5	Open 11-5	Open 11-5	X	Partial Disabled Access	X
Venue 25	Crafty Creations	BN43 5RP	Open 10-4	Open 10-4	Open 10-4	Open 10-4	Open 10-4	Open 10-4	X	Partial Disabled Access	X
Venue 26	The Artist's Den	BN43 5RT	Open 11-5	Open 11-5	X	X	X	X	X	Partial Disabled Access	X
Venue 27	River View Studio	BN43 5RB	Open 11-5	Open 11-5	Open 11-5	Open 11-5	Open 11-5	Open 11-5	X	Venue has steps	Drinks & cake to buy (charity donation)
Venue 28	Artists at West Beach	BN15 5HF	Open 11-5	Open 11-5	Open 11-5	Open 11-5	Open 11-5	Open 11-5	X	Partial Disabled Access	X
Venue 29	Albion Street Southwick	BN42 4DP	Open 11-5	Open 11-5	Open 11-5	Open 11-5	Open 11-5	Open 11-5	X	Venue has steps	X
Venue 30	Garage Studio Worthing	BN11 3QY	Open 11-5	Open 11-5	X	X	Open 11-5	Open 11-5	X	Disabled Access	X

## CREATIVE THINGS TO DO & SEE

Take part in a fabulous and friendly creative workshops and participatory events during the Adur Art Trail this June - suitable for both beginners and experienced artists:

### Introduction to Nature Journaling (Free) with Seana Mallen

Wander, Explore, Wonder and Draw from the Banks of the River Adur.

Tuesday 10th June, 11-12.30. All Materials included, age 14+

Maximum 10 people, sign up to book in advance at [seanamercedes@gmail.com](mailto:seanamercedes@gmail.com)

### Botanical Gelli-Print Taster (Free) with Seana Mallen

Create beautiful colourful prints directly from leaves and ferns without a Press!

Wednesday 11th June, 1.30- 3.00pm at Ropetackle Arts Centre (venue 5)

Just drop by and give it a go!

### Piecing Paper & Textiles (Free) with Gill Dixon

Wednesday 18th June, 2pm to 4pm, Ropetackle Arts Centre (Venue 5),

All materials included, age 14+ Sign up at Ropetackle or by email

to [info@adurartcollective.co.uk](mailto:info@adurartcollective.co.uk)

## PoArtry

During the trail, a project in collaboration with WordFest invites you to **write a poem** in response to an artwork. 16 lines max, title, name of art and artist plus an image of work - with permission from artist.

Four poems will be curated by the Adur Art Collective Committee to be hung on platform 1 at Shoreham Station this autumn.

Send poems to [info@adurartcollective.co.uk](mailto:info@adurartcollective.co.uk) by 30th June 2025.

**seawhite SHOWROOM FACTORY OUTLET**  
Supplying art materials for over 50 years  
Many items less than half price!  
Special Offers & Goods

**10% DISCOUNT INSTORE WITH THIS ADVERT**

Star Trading Estate, Partridge Green, RH13 8RY  
Tel: 01403 712270 - Mon-Fri 9-5pm & Sat 10-1pm  
- Vouchers not to be used in conjunction with any other offer -  
Valid until 31st August 2025 -

**BRIGHTON CITY AIRPORT**

AIRCRAFT CHARTERS . SIGHTSEEING EXPERIENCES  
FLYING LESSONS . HELICOPTER SHUFFLES  
CONFERENCE ROOM HIRE . HUMMINGBIRD RESTAURANT

Brighton City Airport, Cecil Pashley Way, Shoreham-by-sea, BN43 5FF  
[@brightoncityairport](https://www.brightoncityairport.co.uk)

**GICLÉEEXPRESS**  
Art Printing / Framing / Artist Development Consultants

Art Printing & Framing / Artwork Scanning  
Artists Shopify Stores / Logo Design  
Artwork Photography / Greetings Cards

★ Trustpilot ★★★★★

First Floor, 8 Bond Street, Brighton, BN1 1RD (opposite Malarkey)  
Call Tristan: 07980 271563 / [info@gicleeexpress.com](mailto:info@gicleeexpress.com) / [gicleeexpress.com](https://www.gicleeexpress.com)

**FOLLOW US**  
on social media  
for artist profiles  
& Adur Art Trail news

**#adurarts**  
**@adurarts**

**WEBSITE**  
**[adurartcollective.co.uk](http://adurartcollective.co.uk)**

**Follow the Trail on**  
**Google Maps at this QR Link:**

